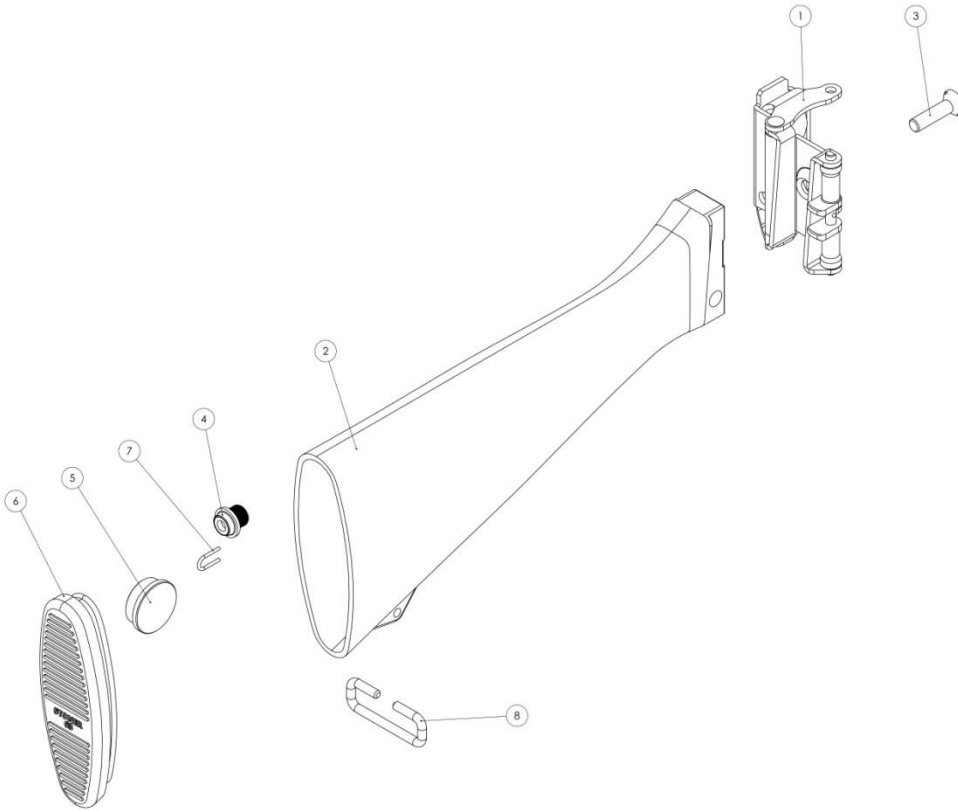


Instructions for Assembling Saxon Armament's Reproduction Commando Stoner 63 Butt Stock.



Item Number with Part Descriptions:

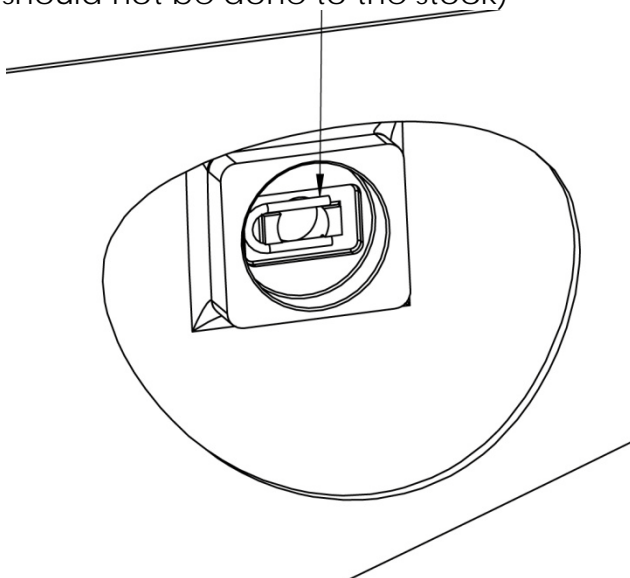
1. Hinge Assembly, Stock (**user supplied**)
2. Folding Butt Stock, Plastic (supplied in kit)
3. Part Number 2377 - Screw, Stock (**user supplied** 1/4 - 28 UNF -2A X 1" long flat countersunk head slotted machine screw - McMaster Carr stock number - 90275A561)
4. Part number 2322 - Nut, Stock (**user supplied** 1/4 - 28 UNF -2B self locking splined nut - Specialty Fasteners stock number - SPLNE-04-F)
5. Plug, Detent Spring (supplied in kit)
6. Part Number 2114 - Pad, Butt Stock (**available separately**)
7. Part Number 2368 - (**user supplied** made from 0.055+/-0.0001 DIA Music Wire as per attached drawing 2368-100 Rev.A)
8. Sling Loop (**user supplied**)
9. Insulation (not shown, **user supplied**, optional)

Tools required:

1. Large straight bladed screwdriver.
2. Possibly a file/sandpaper/knife for fitting the stock (2) to stock plate (1) interface.
3. Bonding agent suitable for joining nylon 12 and rubber together. (Suggested: Original Gorilla Glue)
4. Bonding agent suitable for joining nylon 12. (Suggested: Gorilla Super Glue)

Assembly Instructions:

1. Using 1/4"-28 threaded rod or a magnet on a stick, place the nut (4) inside the stock towards the front. Using the stock screw (3) start the thread and then partially seat the splines of the nut into the hole at the front of the stock (2).
2. Once the nut's (4) splines are partially seated into the stock (2) hole, unscrew the stock screw (3) and install the hinge assembly (1) onto the front of the stock (2).
3. Check fit of hinge assembly (1) against stock (2) ensuring the hinge assembly (1) full seats against the front of the stock (2). If it does not, modify the stock (2) a little at a time until it does using suitable means. Reinstall the stock screw (3) and tighten.
4. After tightening stock screw (3) against hinge assembly (1) and fully seating the spline nut (4), install the stock assembly onto the mounted trigger group and insert the stock retaining pin. Apply downward pressure on the rear of the stock (2) to test to make sure the spline nut (4) is fully seated. If the hinge assembly (1) becomes loose, retighten the stock screw (3) and repeat this step until the hinge assembly (1) no longer becomes loose.
5. Install the detent spring (7) into the recess as shown in the following illustration. (Part of the stock wall has been removed in the picture for clarity only and should not be done to the stock)



6. Install the detent spring plug (5) into the recess and ensure that it fully seats. Make any minor adjustments to the detent spring plug (5) that are required.
7. Apply bonding agent around the edge of the detent spring plug (5) and allow it to run to the side that is inaccessible.
8. **Optional** - If desired, install the desired type of insulation material inside the stock (2) leaving enough room for the butt pad (6) to be fully seated.
9. Test fit the butt pad (6) into the stock (2) and correct any fitment issues detected.
10. Remove the butt pad (6) and clean the mating surfaces of the butt pad (6) and the stock (2).
11. Apply bonding agent to the inside of the stock (2) where the butt pad's (6) rib touches when it telescopes into the stock (2) (follow bonding agent's instructions on its use). Firmly press the butt pad (6) into the stock (2) and seat it fully. Clean up any excess bonding agent. Allow the assembly to dry.
12. **Optional** - If desired, install the sling loop (8).
13. Mount stock assembly to the trigger frame using the standard method.